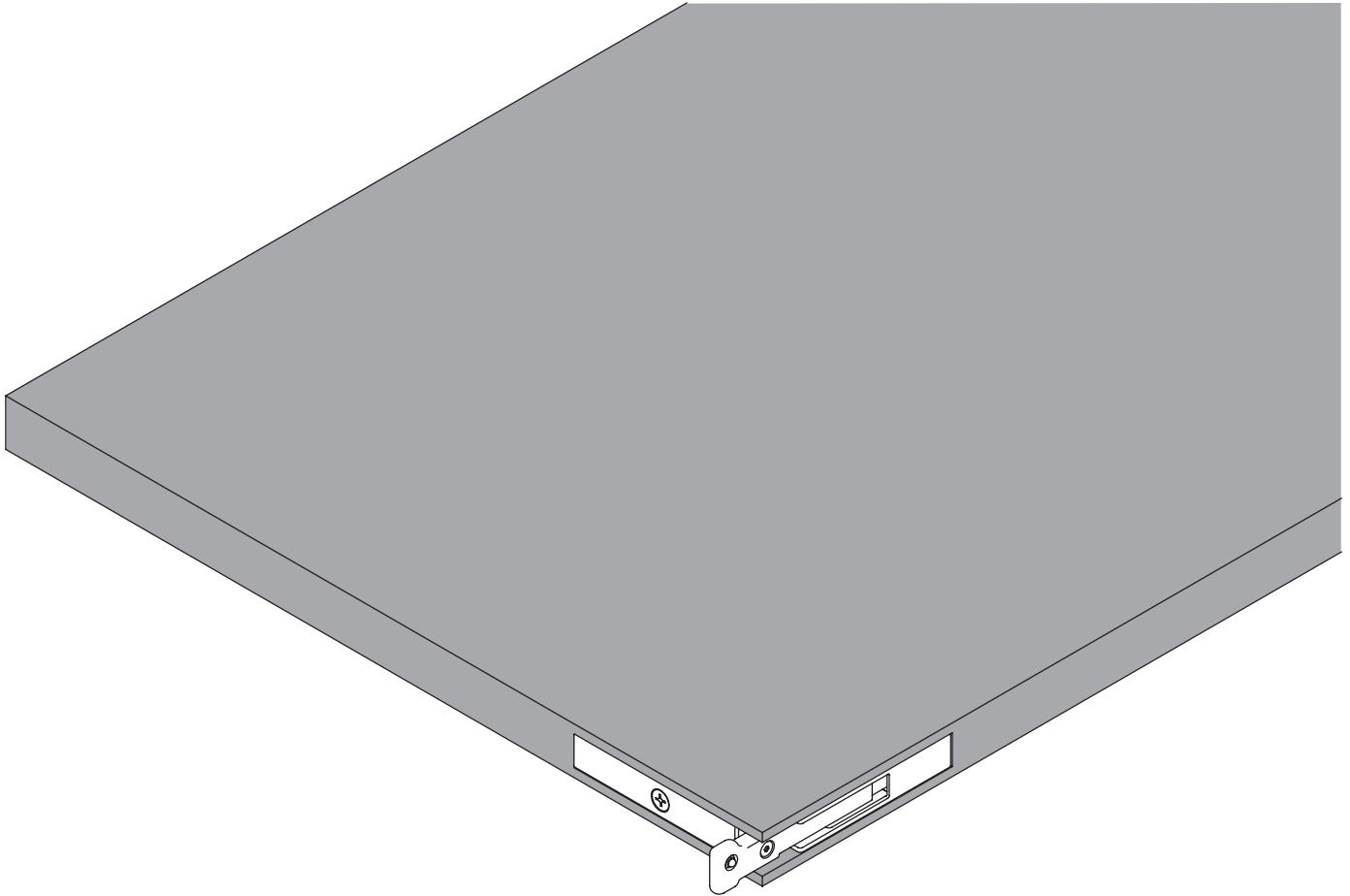


Integration instruction

LINK SYSTEM

Adjustable shelving



RoHS
COMPLIANT

UL
E521795

MADE IN
FABRIQUÉ AU



CANADA

*Refer to c.o.a. at the end of the document

A

This instruction **only covers the integration details of the LINK connector to a shelf**, the Eclipse shelf lighting system also requires steps B. and C.

B

The millworker must design-in a **wire passage** to feed the luminaire that will be installed into the shelf, this aspect is not covered in the present document as it pertains to specific aspects of how the shelf is built, the shelf dimensions and tools preference by the millworker.

C

The **luminaire integration** instruction is covered in a separate document, available on our website on a by-product basis.

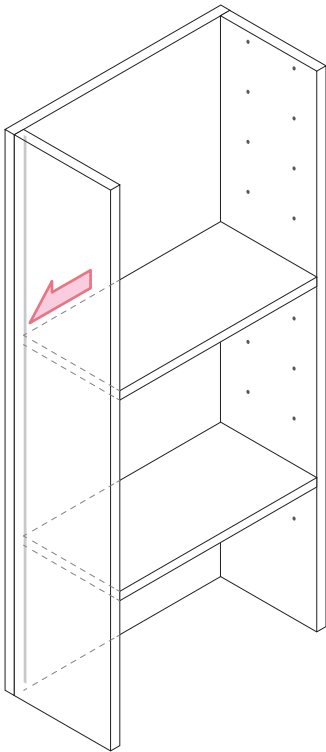


EKLIPSE
ARCHITECTURAL LIGHTING

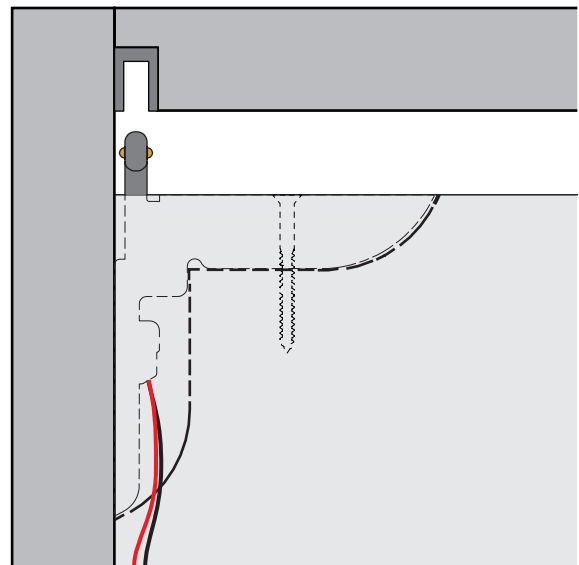
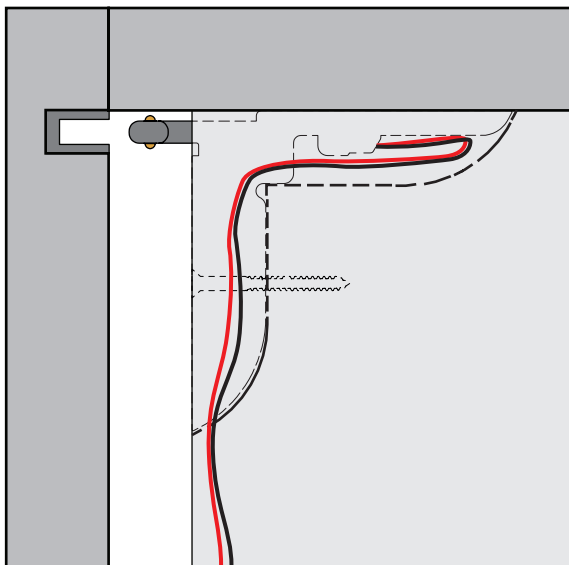
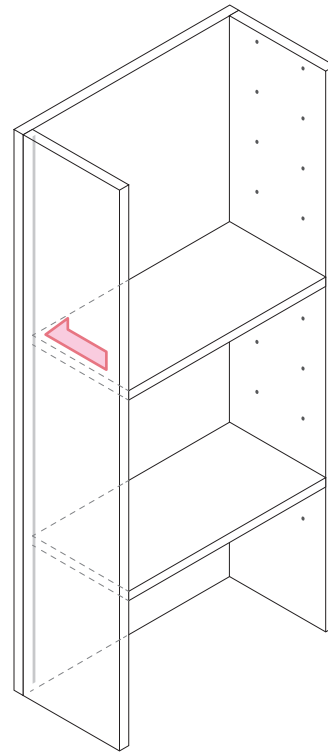
Connector installation position

The same **LINK connector** can be used for **any of the (4) configurations below**. Plan integration details accordingly.

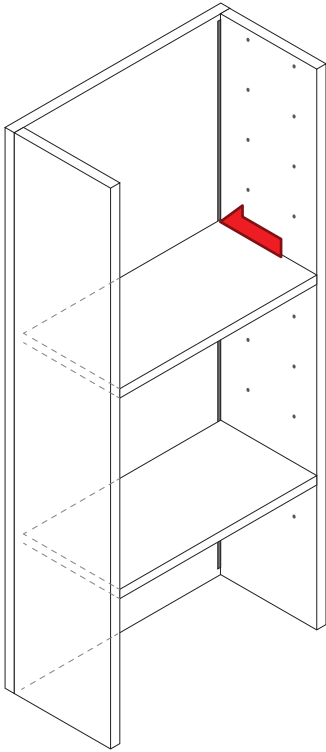
SIDE LEFT CORNER



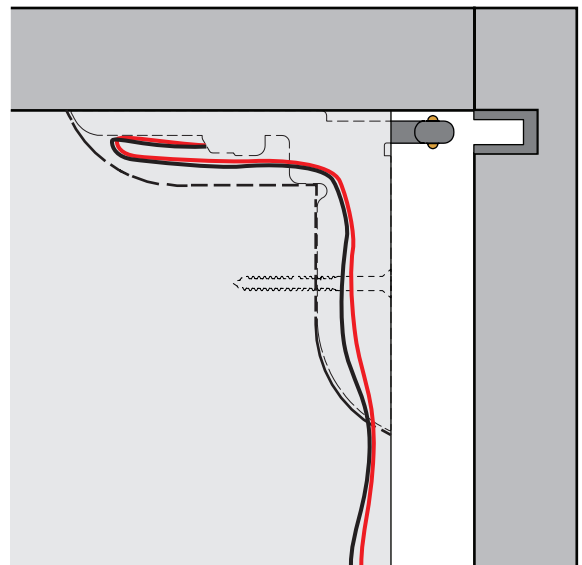
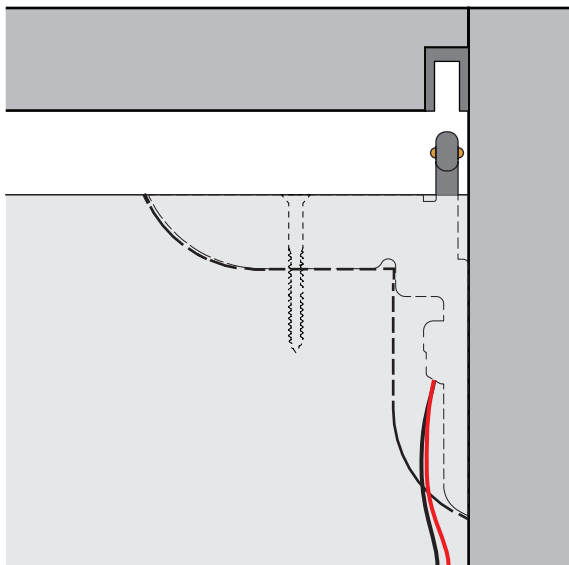
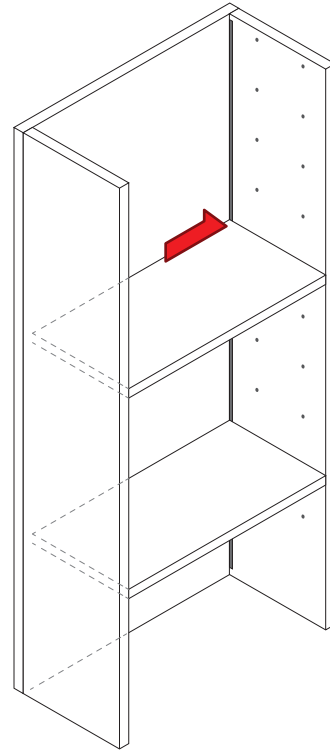
BACK LEFT CORNER



SIDE LEFT CORNER



BACK LEFT CORNER

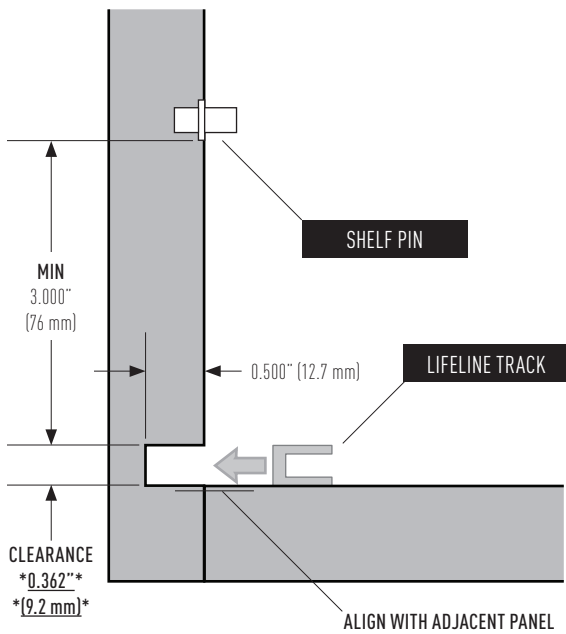


Woodwork detail

TOLERANCES ± 0.008 (0.2 mm)

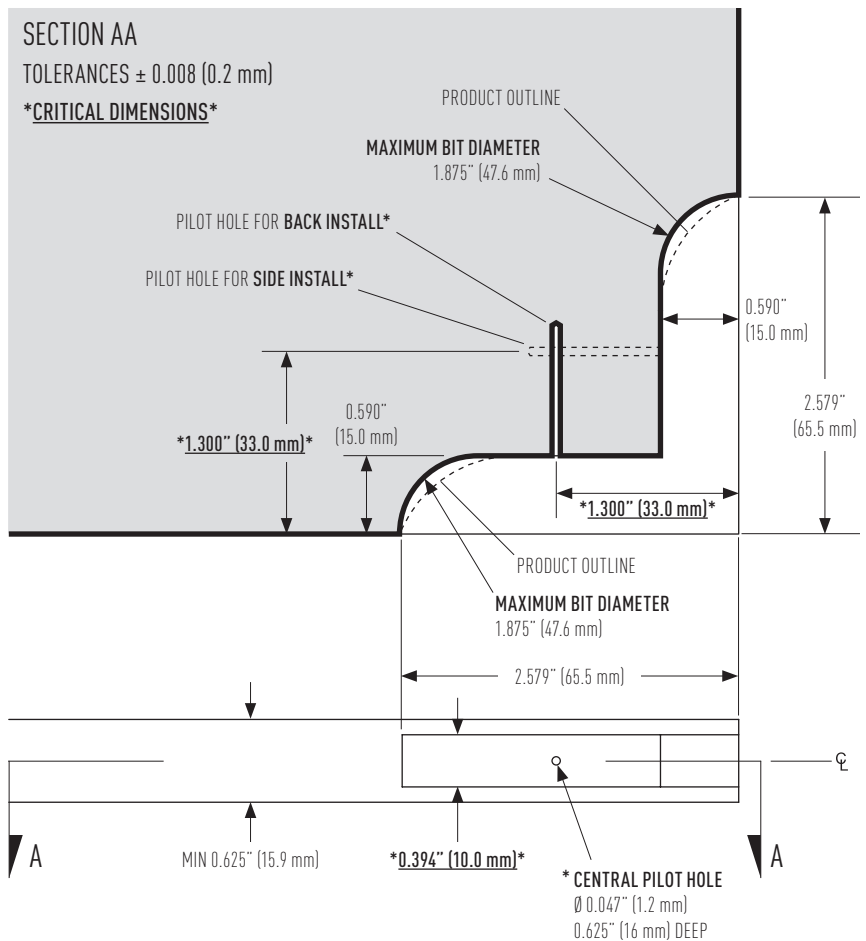
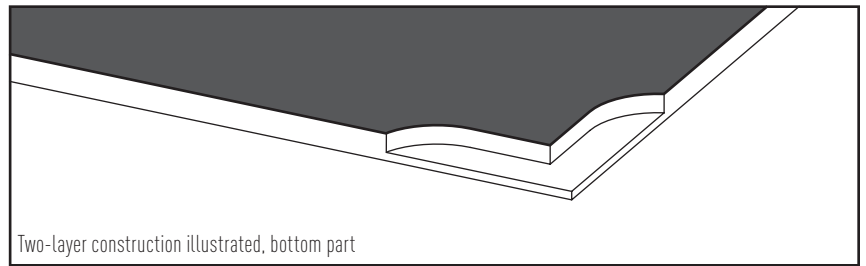
CRITICAL DIMENSIONS are between stars and underlined

A LIFELINE track integration



PLAN VIEW

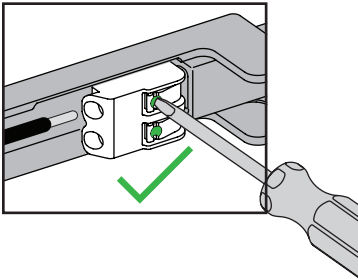
B LINK connector integration



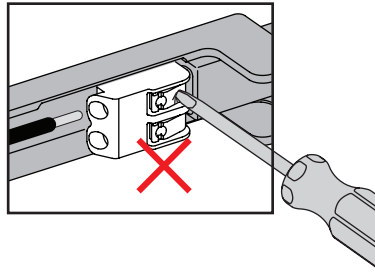
Installation

1

Gently push using the specific cavity for wire insertion.

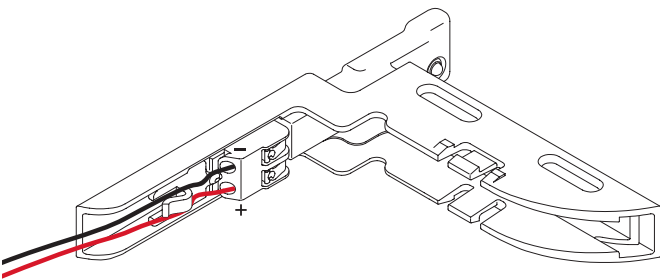


Pushing elsewhere on the tab, or using excessive force can break connector housing.

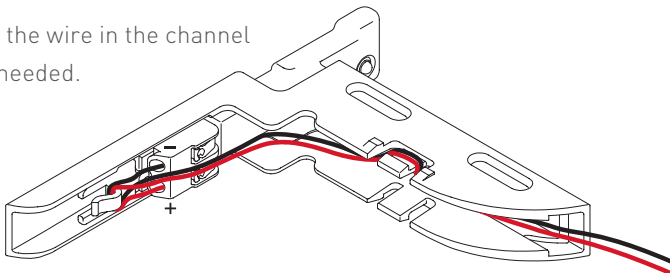


2

Please make sure the correct polarity is respected. The red wire position is marked onto the LINK connector.

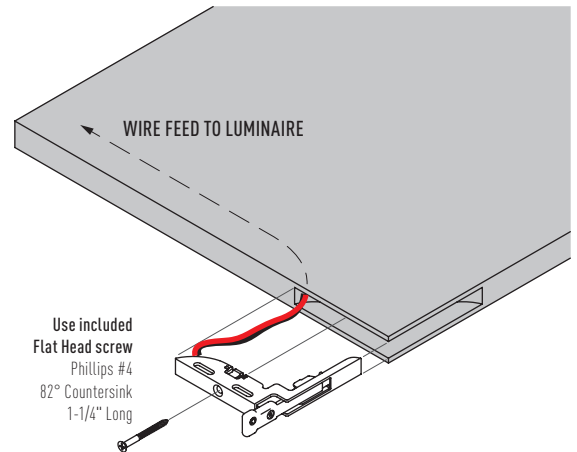


Adjust the wire in the channel when needed.



3

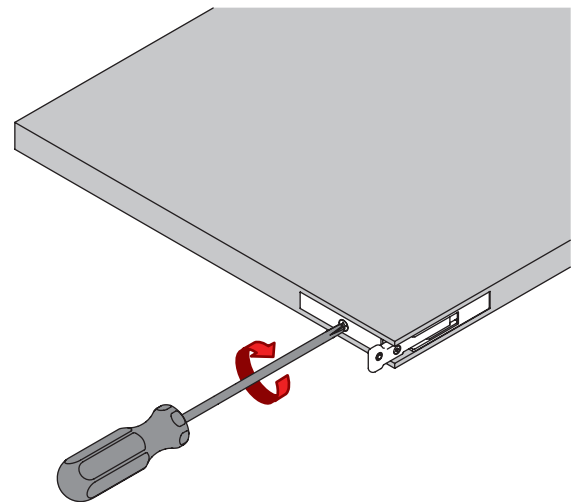
Install the **LINK connector** by screw.



4

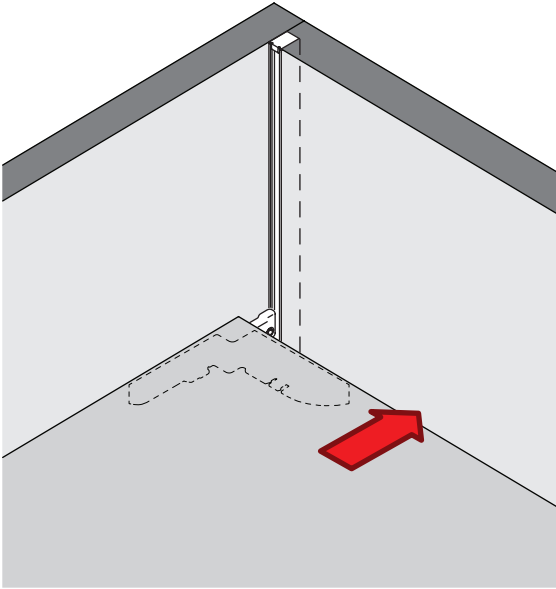
Tighten lightly with screwdriver only.

Using power tools or excessive torque might break the product.

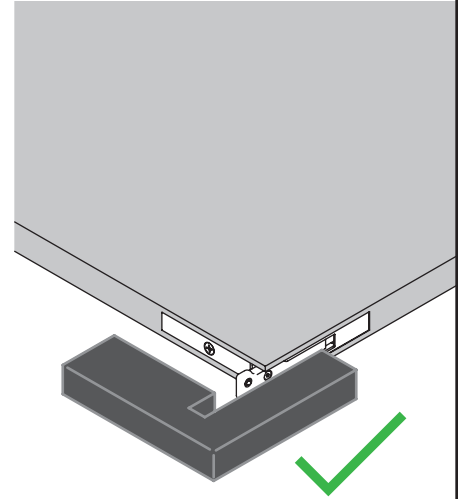
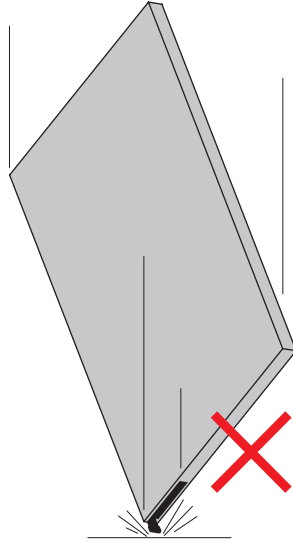


5

Insert LINK into the previously installed LIFELINE track.



Make sure the LINK connector is adequately protected during shipping or relocation.



Conditions of applications

Link is UL recognized part under IYQX2.E521795 certificate. Integrator must follow the following conditions in using Link into its certified assembly.

I

Total current load must not exceed 1.3A in 24VDC applications. This amounts to 31W of lighting fixtures.

Ex.:

62" of linear products @ 6W/ft;
93" of linear products @ 4W/ft;
10-12 Pixis projectors (using steady state load).

II

Link outer case temperature must not exceed 65° C (150° F) in the end use application (Mechanical RTI).

III

Link is designed for use in combination with Eclipse Lifeline Track and a suitable Class 2 output power supply.

IV

Integrator / Manufacturer of powered furniture must install and use Link in compliance with its end-use product requirements. Adequate product testing must be performed in certifying final assembly of end-product. Eclipse is not responsible for misuse of its Link connector. Suitability of mounting means and securement in shelves as well as shelves mounting means shall be considered in end-product.

V

Acceptable wire type to be determined by the end-product compliance requirements. Integrated connector accepts wire sizes 24-18 AWG solid or stranded (0.5-1.0 mm diameter, 0.2-0.75 mm² CS).

ARCHITECTURAL LIGHTING **EKLIPSE**

2090 rue Moreau
Suite 100
Montréal, QC - H1W 2M3
Canada

T +1 514 590 0099
INT 1 877 590 0099
F +1 514 590 0098
sales@eklipselighting.com
www.eklipselighting.com

Specifications may vary, without altering or reducing product performance.

All information on this document are the sole property of Eclipse

Architectural Lighting inc.
Reproduction of this document, in whole or in part, without written permission is illegal.