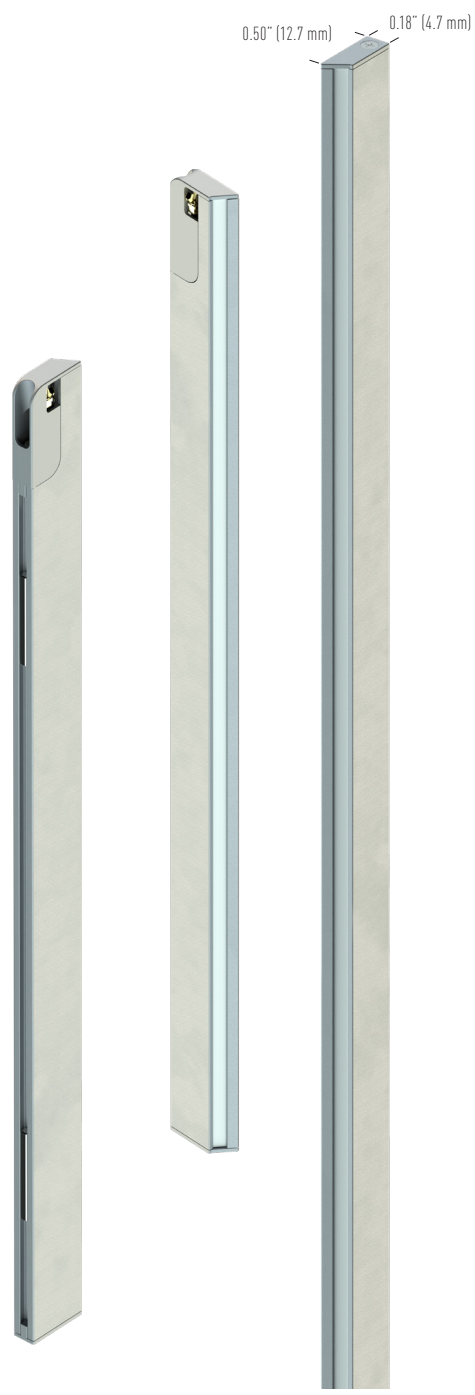


Date _____ Specifier _____ Project _____ Type _____



MILI LIFELINE

A magnetic beam that turns walls and surfaces into your canvas

Connects anywhere along Lifeline for flawless light distribution

Available in 3 optical distributions for multiple settings

Application



Mate with LIFELINE



Wall washing and grazing



Asymmetric lighting

Light output

Standard light output

Light source

820 lm/ft @ 6 W/ft, 3500K, 80 CRI

Reference configuration				Luminous Flux Density		Efficacy
CCT	CRI	FINISH	TILT ANGLE	W/ft	Delivered Lumens	
3500K	80	ACL	35°	4	326 lm/ft (1070 lm/m)	77 lm/W
				6	480 lm/ft (1575 lm/m)	72 lm/W

Total Light Loss Factor (TLLF) calculation

CCT/CRI table						Finish table		Beam tilt table	
CCT	CRI	LLF	CCT	CRI	LLF	FINISH	LLF	TILT ANGLE	LLF
2700K	80	0.96	3000K	80	1.00	ACL	1.00	10°	0.86
	90	0.79		90	0.86		25°		0.94
3500K	80	1.00	4000K	80	1.03	ABK	0.82	35°	1.00
	90	0.86		90	0.89				

CCT/CRI LLF × Finish LLF × Beam tilt LLF = TLLF

Actual light output

Example configuration				Reference LFD		Actual LFD	
CCT	CRI	FINISH	TILT ANGLE	W/ft	Lum. Flux Density (LFD)	Lum. Flux Density (LFD)	
4000K	80	ABK	25°	4	326 lm/ft (1070 lm/m)	258 lm/ft (845 lm/m)	
				6	480 lm/ft (1575 lm/m)	380 lm/ft (1245 lm/m)	

1.03 × 0.82 × 0.94 = TLLF 0.79

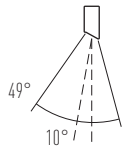
Optical distributions

10° beam inclination

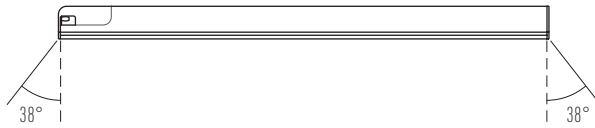
10D

LIGHT BEAM

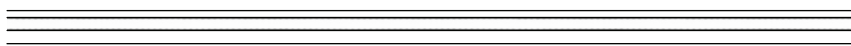
SIDE VIEW



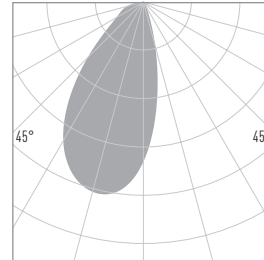
FRONT VIEW



PERCEPTION OF UNIFORMITY



LIGHT DISTRIBUTION



Beam angle 49°
Tilt angle 10°
Ext. spread 38°

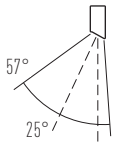
315 Cd, 412 delivered lumens @12"

25° beam inclination

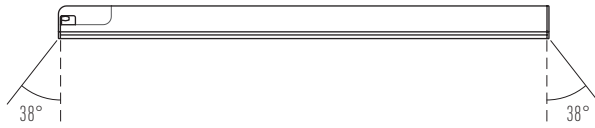
25D

LIGHT BEAM

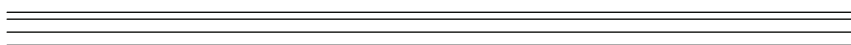
SIDE VIEW



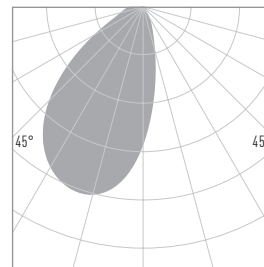
FRONT VIEW



PERCEPTION OF UNIFORMITY



LIGHT DISTRIBUTION



Beam angle 57°
Tilt angle 25°
Ext. spread 38°

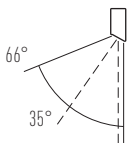
301 Cd, 448 delivered lumens @12"

35° beam inclination

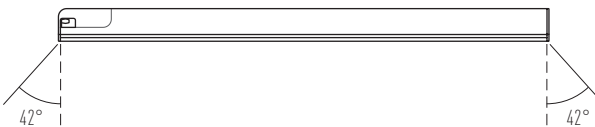
35D

LIGHT BEAM

SIDE VIEW



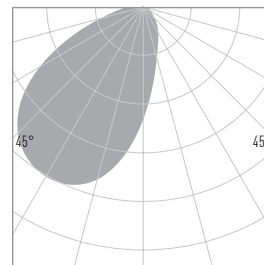
FRONT VIEW



PERCEPTION OF UNIFORMITY



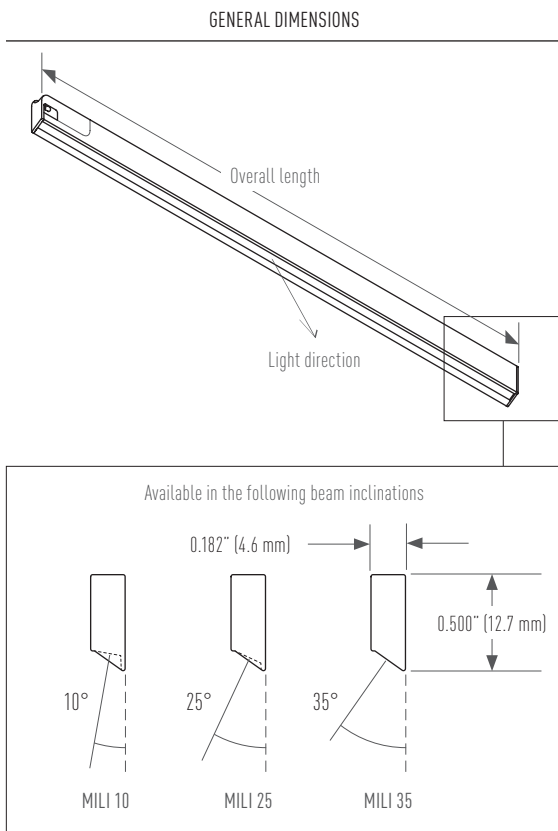
LIGHT DISTRIBUTION



Beam angle 66°
Tilt angle 35°
Ext. spread 42°

289 Cd, 480 delivered lumens @12"

Physical

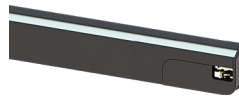


Construction

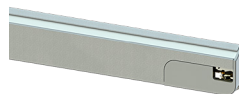
Aluminium body
Microstructured optical film

Finish

ABK Anodized black



ACL Anodized clear



Weight

0.05 lbs/ft (80 g/m)

Length specifications

8.1", 10.1" to 60.1" in increments of 1"
(see last page for metric equivalences)

Ingress protection

IP40

Operating ambient temperature

0 °C to 40 °C

Storage temperature

0 °C to 40 °C at 50% humidity.

Electrical

i This product is a **DC LED Lighting Module**. The following are required to operate as a complete system – to order separately:

- Power Supply**
24 VDC | Constant Voltage | PWM (if dimmable) | Remote Installation
Recommended driver: Eclipse Light Manager LM-24V-100W-[...] *[1% dim in 0-10V / DALI / Ecosystem]*
- Track System**
LIFELINE low voltage track system is required to operate Mili

MODULE CURRENT REGULATION

PASSIVE

DRIVER COMPATIBILITY

UNIVERSAL*

**following driver spec. req., works with all models*

Input Voltage 24 VDC in Constant Voltage

Power Density 4 W/ft | 6 W/ft (13 W/m | 20 W/m)

Dimming Capable of operating down to 0.1%
[depends on driver performance/limitations]

Wiring None needed, integrated pins to case for LIFELINE connection

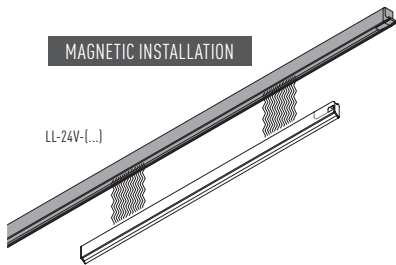
Safety Information cULus Listed, CE, SELV, Class 2, Dry location

Installation Hot Pluggable. Can be safely removed during operation, Cool Touch. See LIFELINE integration instructions.

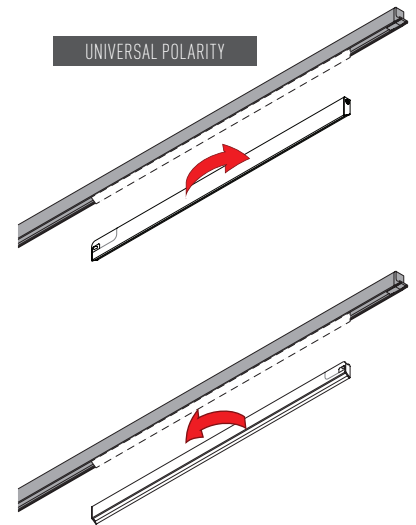
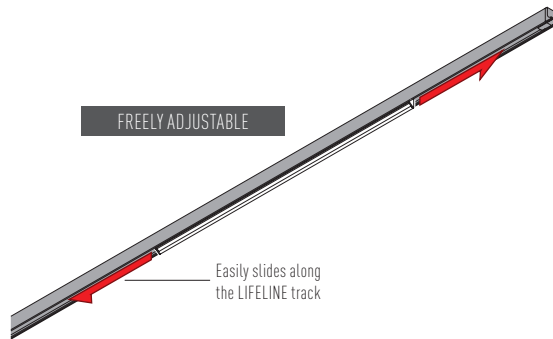
Cable limit Voltage loss tolerance due to remote driver cable course, up to -2.5 Volts. See LIGHT MANAGER spec for max. cable length table per AWG.

Applications See LIFELINE

Integration overview



LIFELINE track system required for installation (sold separately). See LIFELINE for building a complete order code.



Ordering code

PRODUCT		CORE OPTIONS						
ID	CONSTRUCTION TEMPLATE	INPUT	OUTPUT	FINISH	CCT CRI	ANGLE	LENGTH	
M	LL	24V	4W	ABK	2700K	80	8.1	
			6W	ACL		90	10.1 to 60.1	
M	LL			ABK Anodized black	3000K	80	Inches	
MILI	LIFELINE					90		
				ACL Anodized clear	3500K	80	Available in increment of 1".	
						90		
					4000K	80	Always round up to the first decimal.	
						90		

ORDERING CODE	EXAMPLE							
	M	LL	24V	6W	ACL	3000K90	35D	INCHES 46.1

Available fixture lengths

inches	mm	inches	mm	inches	mm	inches	mm	inches	mm
8.1	206	20.1	510	30.1	764	40.1	1018	50.1	1272
		21.1	535	31.1	789	41.1	1043	51.1	1297
10.1	256	22.1	561	32.1	815	42.1	1069	52.1	1323
11.1	281	23.1	586	33.1	840	43.1	1094	53.1	1348
12.1	307	24.1	612	34.1	866	44.1	1120	54.1	1374
13.1	332	25.1	637	35.1	891	45.1	1145	55.1	1399
14.1	358	26.1	662	36.1	916	46.1	1170	56.1	1424
15.1	383	27.1	688	37.1	942	47.1	1196	57.1	1450
16.1	408	28.1	713	38.1	967	48.1	1221	58.1	1475
17.1	434	29.1	739	39.1	993	49.1	1247	59.1	1501
18.1	459								
19.1	485							60.1	1526

ARCHITECTURAL LIGHTING **EKLIPSE**

2090 rue Moreau
 Suite 100
 Montréal, QC - H1W 2M3
 Canada

T +1 514 590 0099
 INT 1 877 590 0099
 F +1 514 590 0098
 sales@eklipseighting.com
 www.eklipseighting.com



Warranty

Our products and relative parts are guaranteed for **three (3) years**. See our terms and conditions on www.eklipseighting.com